



SQUADRON 68

We're going places. Join us.





GRAND DESIGN MEETS THE GRAND TOUR

As beautiful as it is – with its exquisitely designed good looks – the SQUADRON 68 is an intrepid adventurer at heart.

From the outside, Alberto Mancini's vision of strong, bold lines almost seem to push the entire craft forward... as if it's constantly eager to head out to discover new shores, untouched coves and exotic hideaways.

However, once you're aboard, every element you encounter has been purpose-built to beguile you into a state of absolute luxury. Gleaming lacquered wood panels slip elegantly into the background as you walk through the main deck, all on a single continuous plain, without a single step in sight.

The flybridge above extends out unapologetically with more than enough room for lounging in three distinct areas. Below deck, every possible convenience and comfort has been thought of, including an extended forward VIP Cabin that is perfect for your guests onboard.

Exploring has never been so glamorous.





BOLD, GRACEFUL, SEDUCTIVE
FROM EVERY POSSIBLE ANGLE

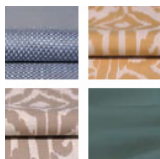




AN INTERIOR TO REFLECT YOUR OWN SIGNATURE STYLE

In the spirit of building the perfect yacht at every possible level, we have also carefully created four different interior design schemes for you to choose from:

Amalfi



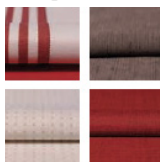
Inspired by Liguria's local architecture, this scheme exudes the sunny warmth synonymous with fragrant Italian lemon trees and the umbrella-lined shores of the Amalfi Coast.

Capri



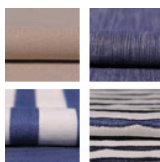
Understated, earthy colours, effortlessly combined with rich natural textures. All the hallmarks of an interior design collection that is as gentle as the Mediterranean breeze.

Hamptons



Evoking elegant vintage design cues, whilst offering a bold and contemporary interpretation of the luxury that was once the preserve of America's East Coast.

St. Tropez



An ode to the sea where all manner of deep, oceanic blues tastefully swirl with muted greys, delicate creams and classic nautical motifs.



GRAND PROPORTIONS ELEGANT PROFILE

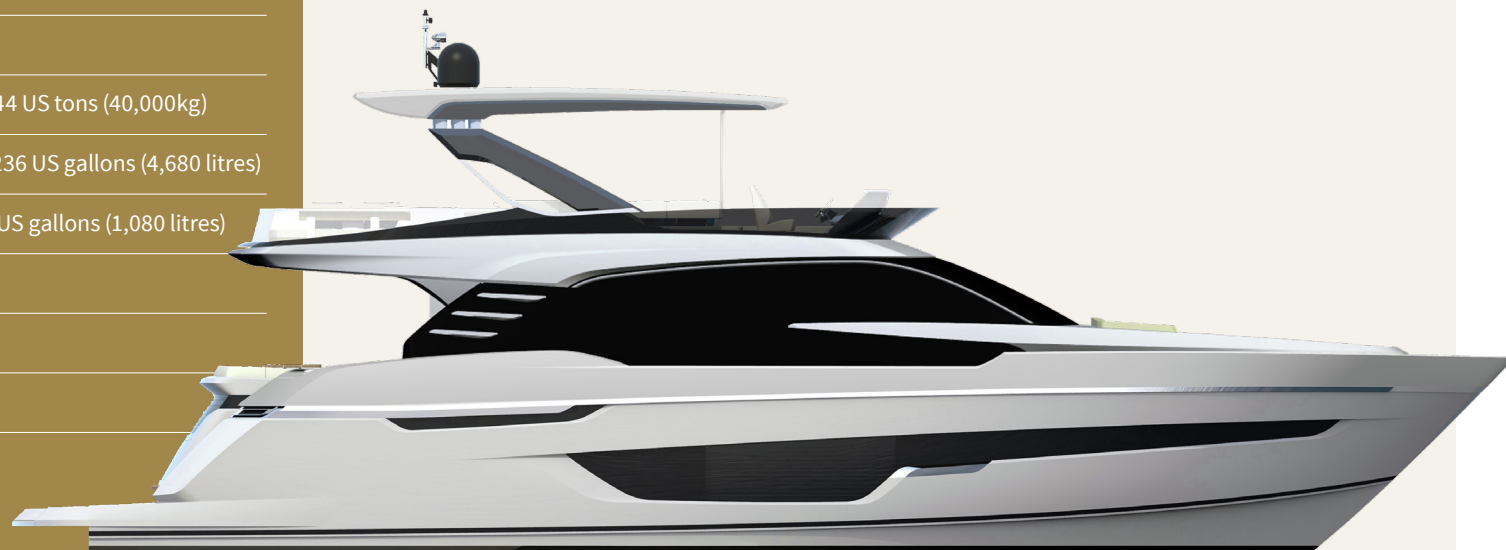
Principal Dimensions

Length overall (inc. pulpit)	67'8" (20.62m)
With extended platform	70'11" (21.61m)
Beam (inc. gunwale)	17'2" (5.23m)
Draught	5'1" (1.57m) unloaded
Height above waterline	20'1" (6.13m)
Transport height	20'4" (6.24m)
Dry weight (approx.)	39.37 imp. tons/44 US tons (40,000kg)
Fuel capacity	1,029 gallons/1,236 US gallons (4,680 litres)
Water capacity (inc. calorifier)	237 gallons/285 US gallons (1,080 litres)
Sleeps	6 – 10
Classification	Category B
Capacity	16 persons

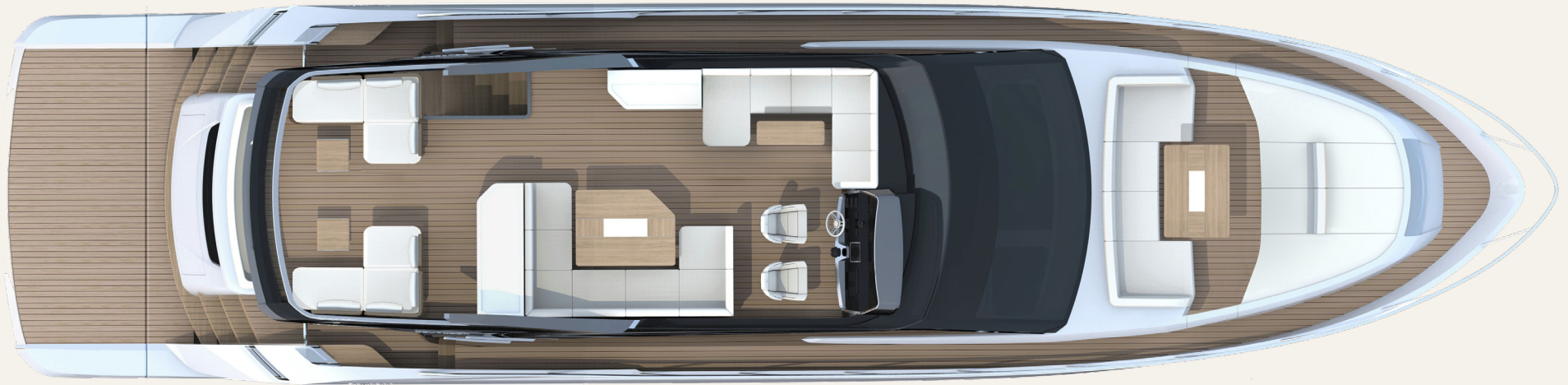
Engines and Performance

2 x Caterpillar C18-1150 shaft drive, diesel (2300hp)

2 x MAN V8 1200 shaft drive, diesel (2400hp)



SQUADRON 68 FLYBRIDGE



Forward seating

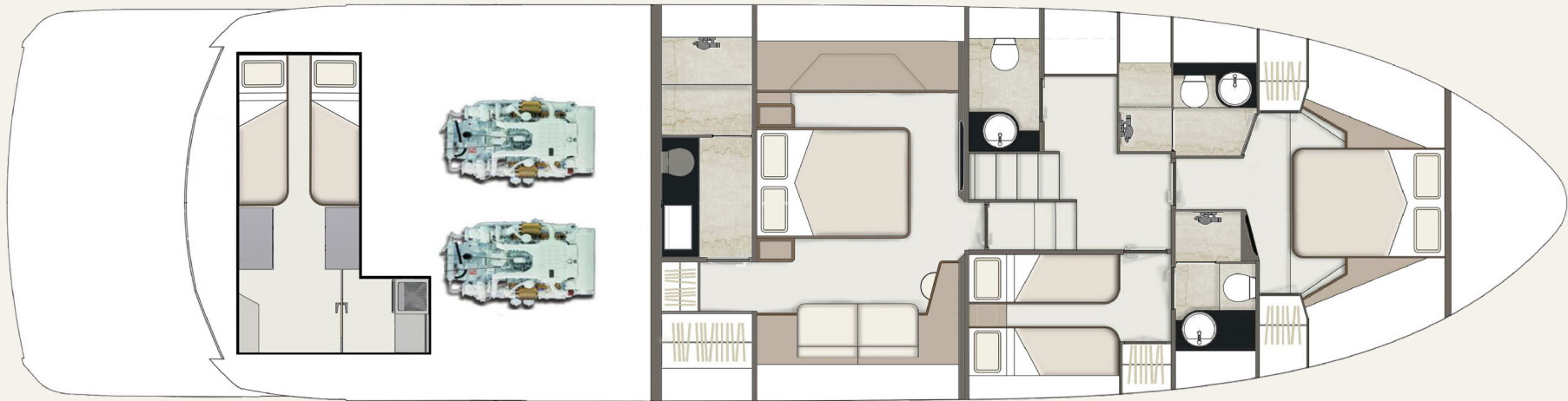


Forward sunbed

SQUADRON 68 MAIN DECK

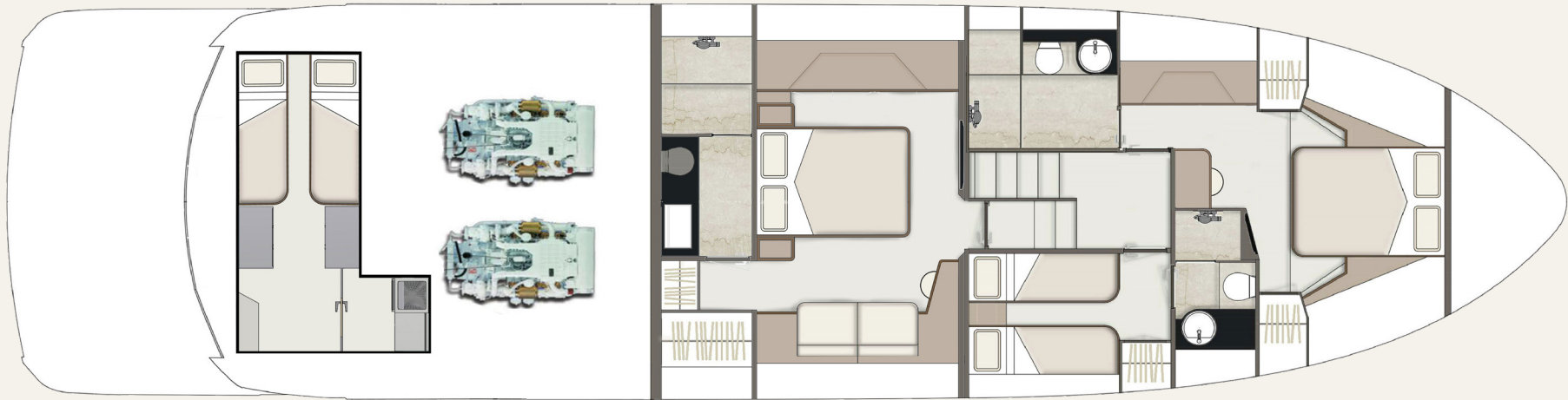


SQUADRON 68 LOWER DECK



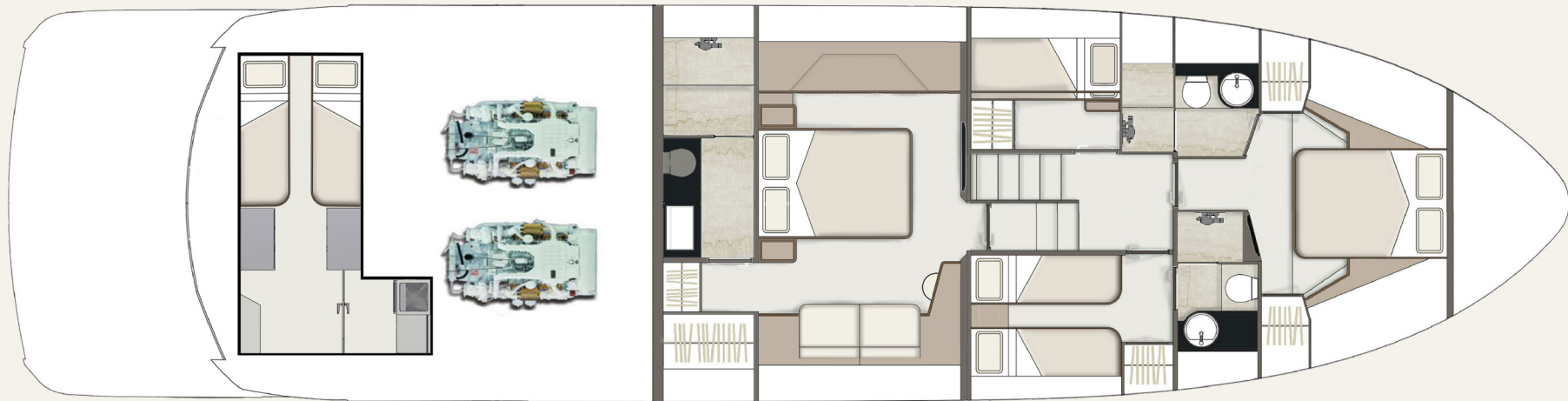
3 Cabin

SQUADRON 68 LOWER DECK



3 Cabin Extended VIP

SQUADRON 68 LOWER DECK



4 Cabin



JOIN THE FAIRLINE FAMILY.

Visit **fairline.com** and start to
see a world of possibilities.

Come to us for adventure. Come to us for design
and heritage. And come to us for forward thinking.
But most of all, come and experience our
acclaimed Dealership network.

Each Appointed Fairline Dealer is a professional, thriving business,
working with your best interests at heart and using their intimate
local knowledge to your advantage. Yes, they will provide you with
a trusted service, but also friendship and care beyond the call of duty.



Fairline Argentina
Fairline Australia
Fairline Baltic
Fairline Benelux and West Germany
Fairline Beirut
Fairline Brazil
Fairline Cala d'Or
Fairline Channel Islands
Fairline Chesapeake
Fairline Colombia
Fairline Côte d'Azur

Fairline Croatia
Fairline Cyprus
Fairline Denia
Fairline Denmark
Fairline Eastbourne
Fairline Eastern Canada
Fairline Egypt
Fairline Finland
Fairline Florida
Fairline Great Lakes
Fairline Greece

Fairline Hong Kong
Fairline Ibiza
Fairline India
Fairline Israel
Fairline Italy
Fairline Korea
Fairline London
Fairline Malta
Fairline Menorca
Fairline Mexico
Fairline Middle East

Fairline Monaco
Fairline New York
Fairline New Zealand
Fairline Norway
Fairline Philippines
Fairline Poland
Fairline Poole
Fairline Portugal
Fairline Russia
Fairline Singapore
Fairline Southampton

Fairline South China
Fairline South Germany and Austria
Fairline South Mallorca
Fairline Sweden
Fairline Thailand
Fairline Turkey
Fairline Ukraine

Fairline Yachts constantly seek ways of improving specifications, design and production. Therefore, alterations take place on a continuous basis. Whilst every effort is made to produce up-to-date literature, the descriptions, specifications, illustrations and photographs in this brochure should not be regarded as a definitive guide to current specifications, nor does it constitute an offer for the sale of any particular boat. Performance estimates are given in good faith, but are in no way guaranteed for any particular boat. Dirt on the bottom of the boat, damage to propellers, engine tuning, external water and air temperatures and the weight of crew, fuel and water carried can all adversely affect performance. For these and other reasons we can give no performance guarantees.